



APBA2BP Polyclonal Antibody

Catalog No	YP-Ab-12685
Isotype	IgG
Reactivity	Human;Mouse
Applications	WB;IHC;IF;ELISA
Gene Name	NECAB3
Protein Name	N-terminal EF-hand calcium-binding protein 3
Immunogen	The antiserum was produced against synthesized peptide derived from human NECAB3. AA range:321-370
Specificity	APBA2BP Polyclonal Antibody detects endogenous levels of APBA2BP protein.
Formulation	Liquid in PBS containing 50% glycerol, 0.5% BSA and 0.02% sodium azide.
Source	Polyclonal, Rabbit,IgG
Purification	The antibody was affinity-purified from rabbit antiserum by affinity-chromatography using epitope-specific immunogen.
Dilution	Western Blot: 1/500 - 1/2000. Immunohistochemistry: 1/100 - 1/300. Immunofluorescence: 1/200 - 1/1000. ELISA: 1/40000. Not yet tested in other applications.
Concentration	1 mg/ml
Purity	≥90%
Storage Stability	-20°C/1 year
Synonyms	NECAB3; APBA2BP; NIP1; SYTIP2; XB51; N-terminal EF-hand calcium-binding protein 3; Amyloid beta A4 protein-binding family A member 2-binding protein; Nek2-interacting protein 1; Neuronal calcium-binding protein 3; X11L-binding protein 51
Observed Band	44kD
Cell Pathway	Golgi apparatus .
Tissue Specificity	Strongly expressed in heart and skeletal muscle, moderately in brain and pancreas.
Function	alternative products:Additional isoforms seem to exist. Experimental confirmation may be lacking for some isoforms,function:Inhibits the interaction of APBA2 with beta-amyloid precursor protein (APP), and hence allows formation of beta-amyloid.,PTM:Phosphorylated by NEK2.,similarity:Contains 1 ABM domain.,similarity:Contains 1 EF-hand domain.,subunit:Interacts with the N-terminal domain of APBA2. Interacts with NEK2.,tissue specificity:Strongly expressed in heart and skeletal muscle, moderately in brain and pancreas.,
Background	The protein encoded by this gene interacts with the amino-terminal domain of the neuron-specific X11-like protein (X11L), inhibits the association of X11L with



amyloid precursor protein through a non-competitive mechanism, and abolishes the suppression of beta-amyloid production by X11L. This protein, together with X11L, may play an important role in the regulatory system of amyloid precursor protein metabolism and beta-amyloid generation. The protein is phosphorylated by NIMA-related expressed kinase 2, and localizes to the Golgi apparatus. Multiple transcript variants encoding different isoforms have been found for this gene. [provided by RefSeq, Jul 2008],

matters needing attention

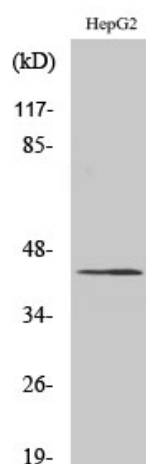
Avoid repeated freezing and thawing!

Usage suggestions

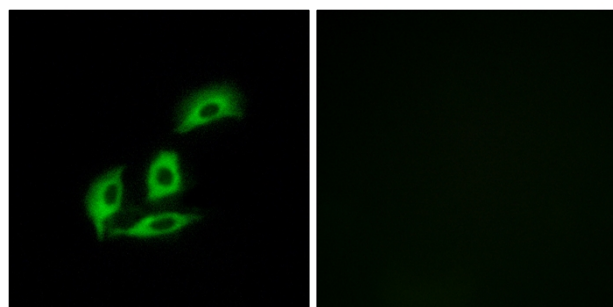
This product can be used in immunological reaction related experiments. For more information, please consult technical personnel.



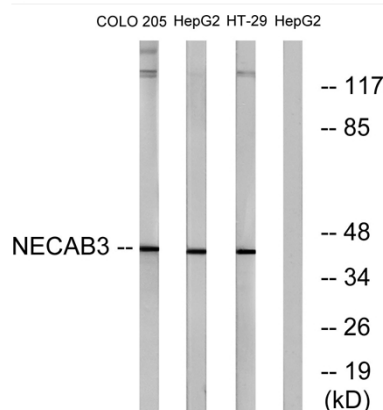
Products Images



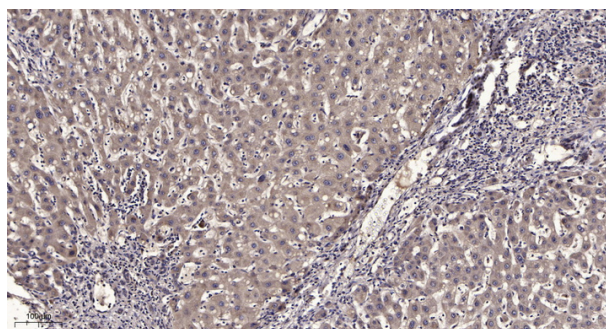
Western Blot analysis of various cells using APBA2BP Polyclonal Antibody



Immunofluorescence analysis of A549 cells, using NECAB3 Antibody. The picture on the right is blocked with the synthesized peptide.



Western blot analysis of lysates from HepG2, COLO, and HT-29 cells, using NECAB3 Antibody. The lane on the right is blocked with the synthesized peptide.



Immunohistochemical analysis of paraffin-embedded human liver cancer. 1, Antibody was diluted at 1:200(4° overnight). 2, Tris-EDTA, pH9.0 was used for antigen retrieval. 3, Secondary antibody was diluted at 1:200(room temperature, 45min).